



Infrared Thermometer



Fluke 59 Mini

Fluke 59 Mini

Reliable temperature measurements. Wherever you need to go

The Fluke 59 Mini digital thermometer is the perfect product for electricians to do daily electrical installation and maintenance jobs. The Fluke 59 Mini infrared thermometer offers quick and reliable surface temperature readings. This compact and portable design enables technicians to easily carry, hold and operate the meter under industrial environment.

Product highlights

- Small and lightweight design fits easily into your tool box
- Single point laser sighting for accurate and repeatable measurements
- Easy-to-use for everyday temperature measurements
- Large, easy to read backlit LCD display for easy viewing
- Measurements Range - 18°C to 275°C (0°F-525°F)
- 8:1 Distance to spot (D:S)
- Statement of calibration practices included
- 1 year Fluke India warranty ratio

Fluke 59 MAX / 59 MAX+ Infrared Thermometers

Fits your budget, Fits your job.

With 70 years of expertise as the leader in the test tools industry, Fluke has built the 59 MAX and 59 MAX+ IR thermometers with the precision you need to do your job accurately and within your budget. Designed to withstand a 1 meter drop, you can count on these lightweight, compact IR thermometers to work when you need them.

Product highlights

- Precise laser technology for more accurate and repeatable measurements
- Large, easy to read backlit LCD display for easy viewing
- Small and lightweight design fits easily into your tool box
- Displays the minimum, maximum or average temperature, or the difference between two measurements
- Hi and Lo alarms for rapid display for measurements outside the limits
- Measurement Range - F59 MAX : -30°C to 350°C
- Measurement Range - F59 MAX+ : -30°C to 500°C
- 10:1 Distance to Spot ratio, 59 MAX+ (8:1 Distance to Spot ratio, 59 MAX)
- IP40 rated for extra protection
- Powered by one (1) AA battery
- Statement of calibration practices included
- 1 year Fluke India warranty



Fluke 59 Max+

Infrared Thermometer

62 Max IR Thermometers

Temperature is often the first indication of potential problem in electrical and mechanical applications. But how can you easily determine if an electrical panel has a hot spot, a motor is overheating or an HVAC system is inefficient? The answer is with an infrared (IR) thermometer. With handheld, non-contact IR thermometers, you can instantly measure equipment temperatures in hard to reach or hazardous areas. And with early detection of abnormal temperatures comes early correction of problems.

Why Fluke 62 MAX ?

Designed with your on-the-job need mind, the new Fluke 62 MAX infrared thermometer is everything you'd expect from the experts in measurement tools, smaller in size, extremely accurate and very easy to use. IP 54 rated for dust and water resistance. Precise yet rugged enough to take a 3-meter drop. In fact, the 62 Max is so tough, that it is the only IR thermometer around you that you can handle without care.



Fluke 62 MAX



Product highlights

Dust and water-resistant : IP54 rated for dust and water resistance.

Rugged : 3-meter (9.8-foot) drop tested.

Ergonomically designed : Completely redesigned for a more comfortable hand fit

Small in size : Small and lightweight; clips to your tool belt or belt loop or easily fits into your tool box.

Distance to spot : Precise laser technology makes for more accurate and repeatable measurements.

Large, backlit display : Large screen makes data easier to read, even in dark areas.

Min/Max/Avg/Dif : Displays the minimum, maximum or average temperature, or the difference between two measurements.

Alarm : Hi and Lo alarms for rapid display of measurements outside the limits.

Power : Both the 62 MAX and 62 MAX+ are powered by a single, standard AA battery.

Specifications

Function	Parameter
Temperature range	-30°C to 500°C (-22°F to 932 °F)
Accuracy	± 1.5°C or ± 1.5% of reading ±2.0 at -10°C to 0°C ±3.0 at -30°C to -10°C
Response time (95%)	<500ms (95% of reading) Spectral Response : 8 to 14 microns Emissivity : 0.10 to 1.00
Optical resolution	10:1 (calculated at 90% energy)
Display resolution	0.1 °C (0.2 °F)
Repeatability of readings	±0.8% of reading or <±1.0°C (2°F), whichever is greater
Power	1 x AA battery
Warrenty	3 years

Infrared Thermometer

Raytek MT4 MiniTemp IR Thermometer



MT4

Infrared (IR) thermometers have become the preferred tool for diagnostics and inspection where temperature is an indicator. Raytek IR thermometers are valued by professionals in a variety of industries—from industrial maintenance to food service, because they quickly, accurately and safely measure surface temperature! Anywhere that temperature is a factor in process, product quality or diagnostics, a Raytek IR thermometer should be close at hand.

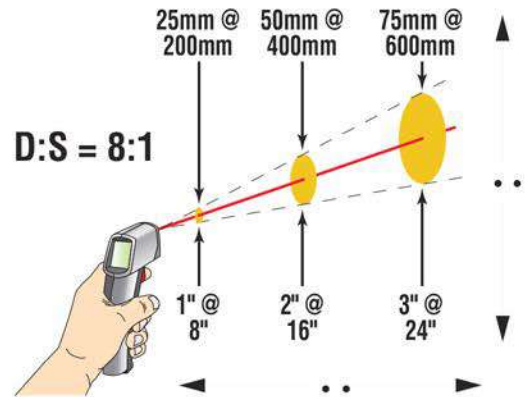
Product highlights

- Simple to use
- Instant readings
- Laser Point (Mt4)
- Large, easy to read display
- Temperature Range (Mt4) -18° to 400°C (0° to 750°F)
- °C or °F selectable
- 1 year warranty



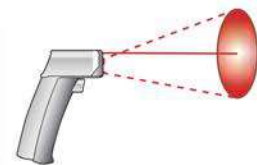
Specifications	MT4
Temperature range	-18 to 400°C (0 to 750°F)
Accuracy	-1°C (30°F) to 275°C (525°F) ±2% or ±2°C (±3.5°F) whichever is greater -18°C (0°F) to -1°C (30°F) ±3°C (±5°F)
Repeatability	±2% of reading, or ±2°C (±3°F), whichever is greater
Response time	500 mSec, 95% response
Spectral response	7–18 μm
Emissivity*	pre-set 0.95
Ambient operating range	0 to 50°C (32 to 120°F)
Relative humidity	10–95% RH noncondensing, @ up to 30°C (86°F)
Storage temperature	-20° to 65°C (-4° to 150°F) without battery
Weight / Dimensions	227 g (0.5 lb); 152 x 101 x 38 mm (6 x 4 x 1.5 in)
Power	9V Alkaline or NiCd battery (included)
Distance to spot size	8:1
Typical distance to target (spot)	Up to 1.5m or 4 ft
Display hold (7 seconds)	Yes
LCD backlit	Yes
Temperature display	°C or °F selectable
Display resolution	0.2°C (0.5°F)
Warranty	1 year

Optical Resolution



The MiniTemp thermometer is intended for close range targets, measuring a minimum target area of 1 inch in diameter out to a distance of approximately 8 inches, and has a 6 inch target measurement area at 4 feet.

Laser Sighting



Laser Point : Single-point laser indicates the approximate center of the target spot.

Infrared Thermometer



Fluke VT04A

Fluke VT04A Visual IR Thermometer Detect issues instantly

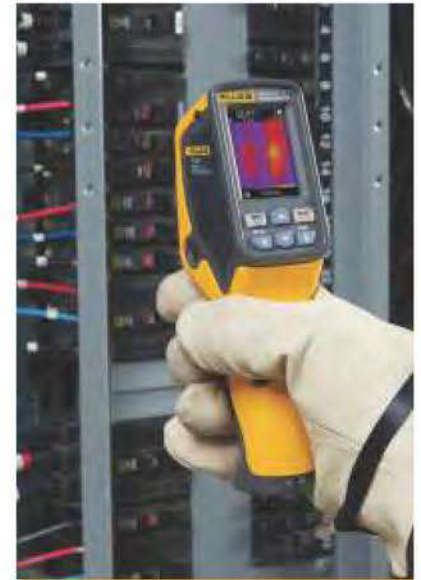
The Fluke VT04A is a groundbreaking Visual IR Thermometer that detects issues instantly by combining a built-in digital camera with a thermal heat map overlay.

The newest addition to the Visual IR thermometer family, the Fluke VT04A features PyroBlend Plus technology that delivers 4x sharper images for enhanced problem detection, best-in-class field of view, and powerful new alarm and auto monitoring features that detect stubborn, intermittent issues.

Prove more. Optimize, analyze and report

VT04A images can be taken in either .bmp or .is2 format. With an .is2 image, you can do the following in SmartView® software:

- Optimize the visible and infrared heat map blending to any level
- Add or remove the center marker and hot and cold markers
- Change the emissivity and background temperature
- Generate a professional report that can easily be edited



Do more with VT04A. See more, find more, prove more

See more. Blend visual and infrared

See issues in context by blending the infrared heat map with the visual image, and get the detail you need by choosing one of five on screen blending modes.

Quickly identify the location of the issue - NEAR or FAR mode automatically aligns the visual and thermal lenses – even from as close as 15 cm (6 in).

Capture accurate temperature readings without taking your eyes off the screen. The center measurement box shows the exact area of temperature measurement. Fill the center box with your target and rest assured you're not measuring the background.

Specifications

Key features	VT04A
Built-in digital camera	Yes
Thermal heat map overlay	Yes, five blending modes
Image optics system	PyroBlend™ Plus optic 4x sharper image than VT02
Field of view	28° x 28°
Hi-Lo temperature alarms	Yes
Time lapse image capture	Yes
Auto-monitor alarm	Yes
Battery type	AA batteries (4)
Training	No training required
Ergonomics	Slim pocket-sized design
Hot and cold markers	Yes
Warranty	2 years

See the difference

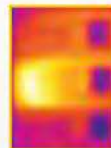
See how a traditional IR thermometer and an entry level infrared camera make it challenging to communicate the issue on breaker 20.



Visual inspection
No issues are obvious to the naked eye.



Traditional IR Thermometer
Optimised for single point measurements



Entry level infrared camera
Challenging to see the exact location



Visual IR Thermometer
Digital image with heat map overlay detects the exact location of the issue



CONTACT DETAIL



tasira@rediffmail.com



2522 8205, 2523 1145



#293, (Old 142)
Linghi Chetty Street,
Chennai-600 001



www.tasirainstrumentations.com